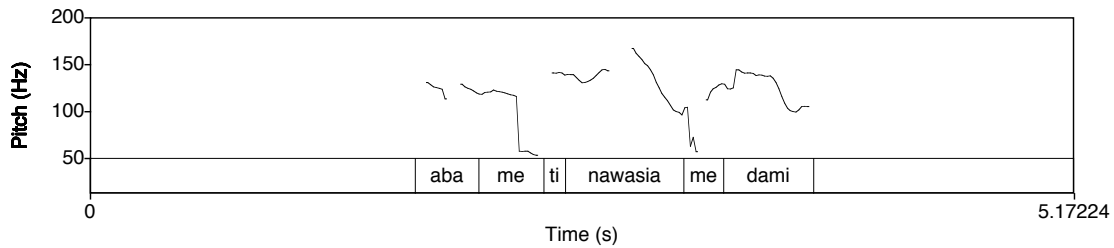
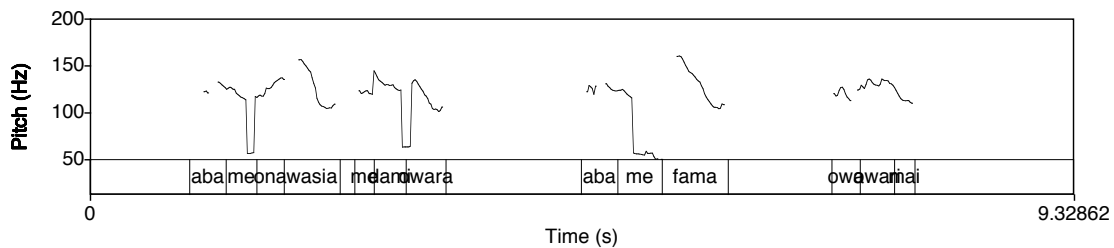
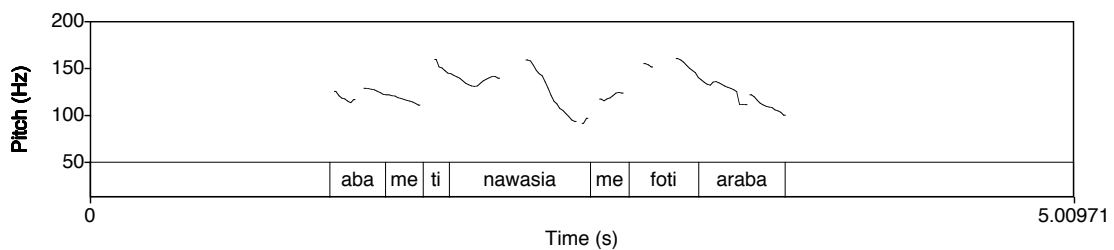


1. [A1.WAV](#)

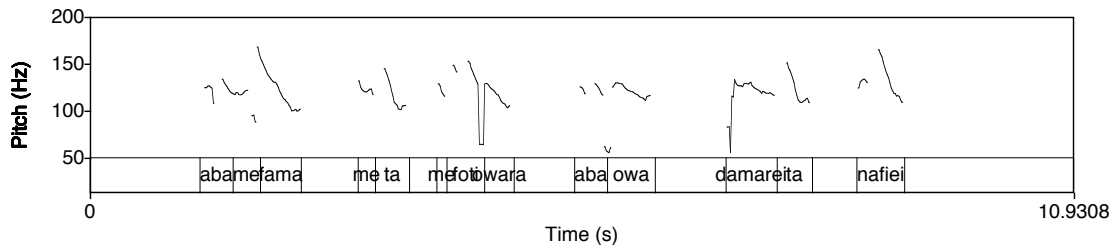
aba-me ti-nawasia me dami
 fish-PL 2S-fishing 3PL many
 did you catch many fishes?

2. [B1.WAV](#)

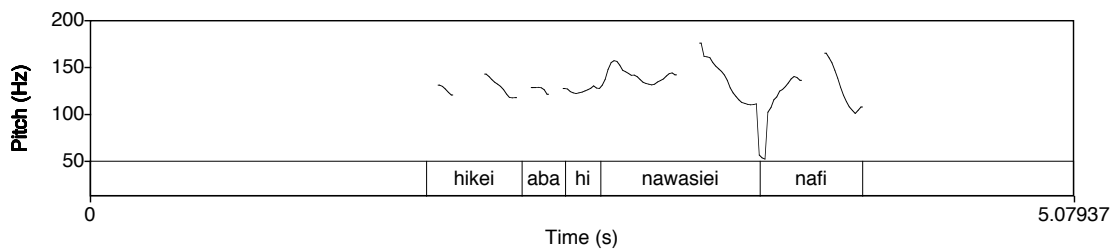
aba-me o-nawasia me dama owara, aba-me fama owa owarimai
 fish-PL 1S-fishing 3PL many NEG fish-PL two one more?
 I didn't catch many fishes, I only caught three.

3. [A2.WAV](#)

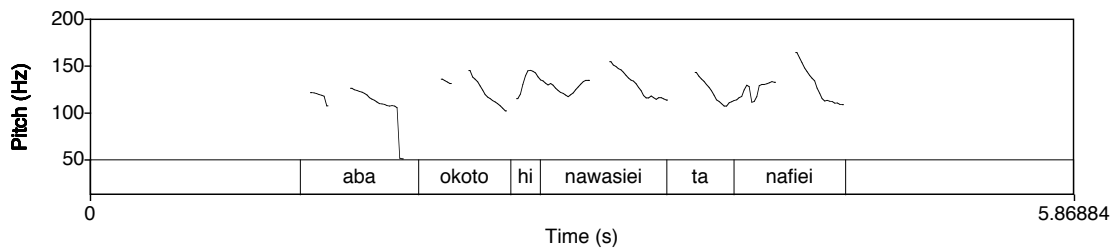
aba-me ti-nawasia me foti araba
 fish-PL 2S-fishing 3PL large QU
 Are the fish big?

4. [B2.WAV](#)

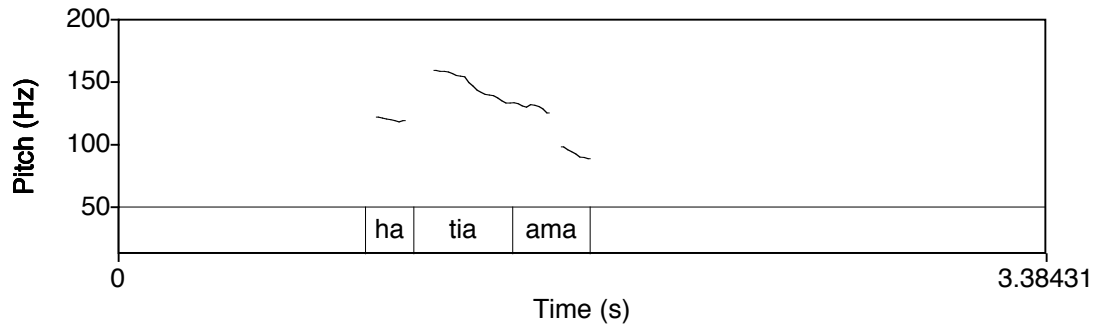
aba-me fama me ta me foti owara aba owa damarei ta nafiei
 fish-PL two 3PL CONTR 3PL large NEG fish one one CONTR big.M
 two fish are not big, but one is very big.

5. [A3.WAV](#)

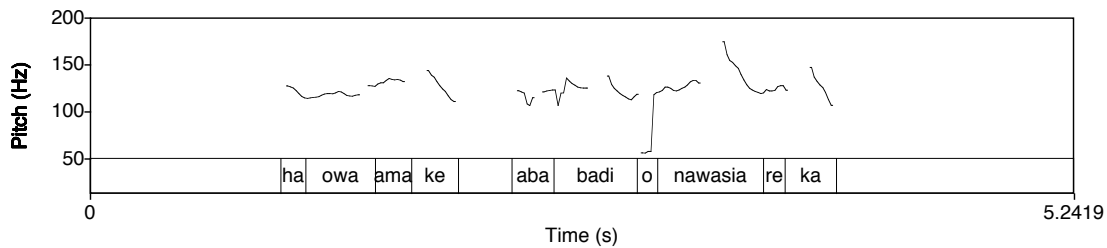
hikei aba hi-nawasiei nafi
 who fish 3-fishing.M big
 who caught the big fish?

6. [B3.WAV](#)

aba o-koto hi-nawasiei taa nafiei.
 fish 1S-daughter 3-fishing.M CONTR big.M
 my daughter caught the fish.

7. [A4.WAV](#)

ha tia-ama?
 DEM 2S.OBJ-EQU
 that was you?

8. [C1.WAV](#)

ha owa ama-ke aba badi o-nawasia-re-ka.
 DEM 1S.OBJ EQU-DEC fish big 1S-catch?-DEC
 yes, it was me, I caught the big fish.