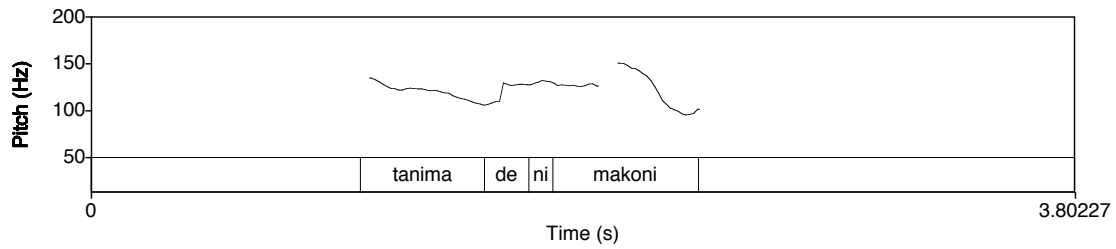
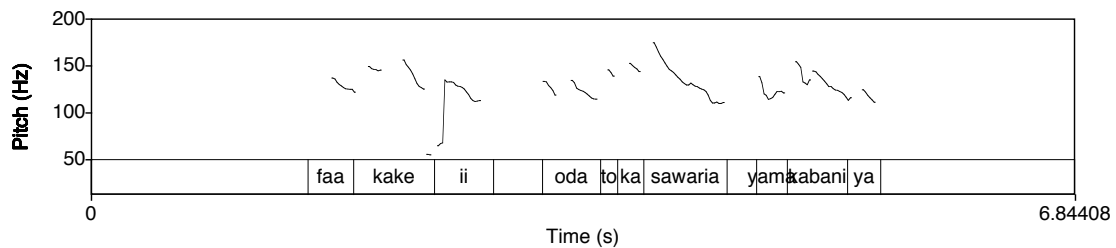
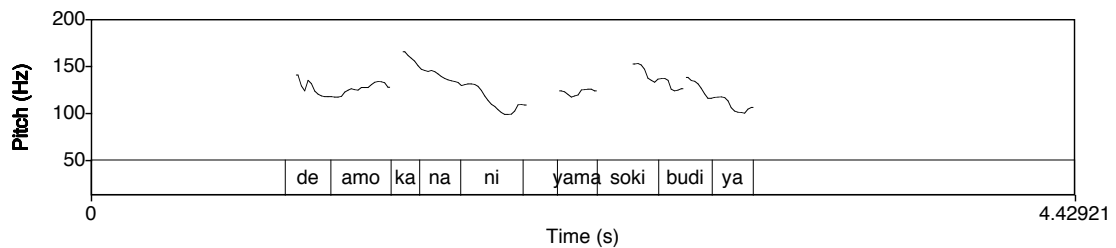


1. [A1.WAV](#)

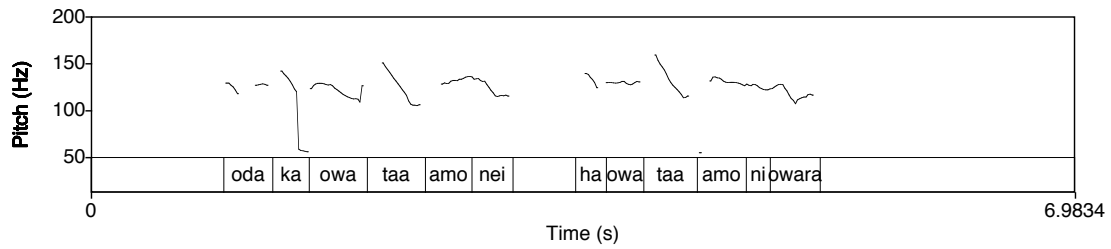
taa nima dee-ni makuni?
 what appear? 2PL-? happened
 What happened to you two?

2. [B1.WAV](#)

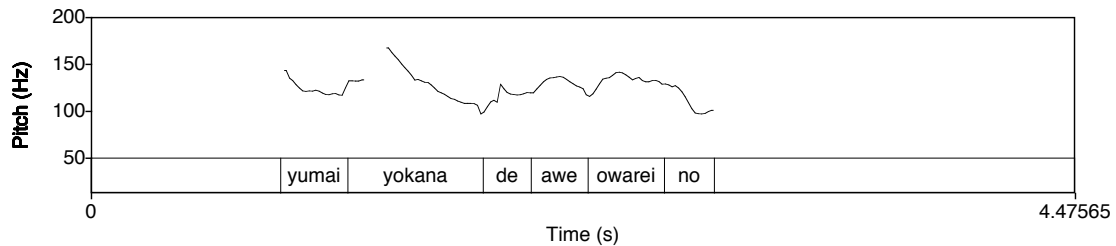
faa kake ii oda to-ka sawaria yamakabani-ya
 rain ? 1PL away-go get.lost jungle-LOC
 It started raining and we got lost in the jungle.

3. [A2.WAV](#)

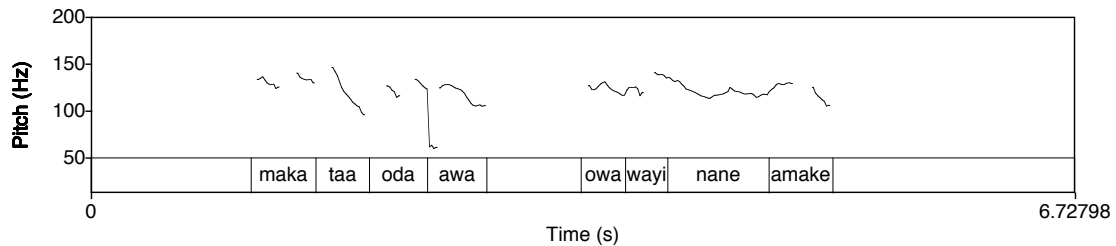
de amo kana-ni yama sokibodi-ya?
 2PL sleep AUX-? night-AT
 Did you sleep at night?

4. [B2.WAV](#)

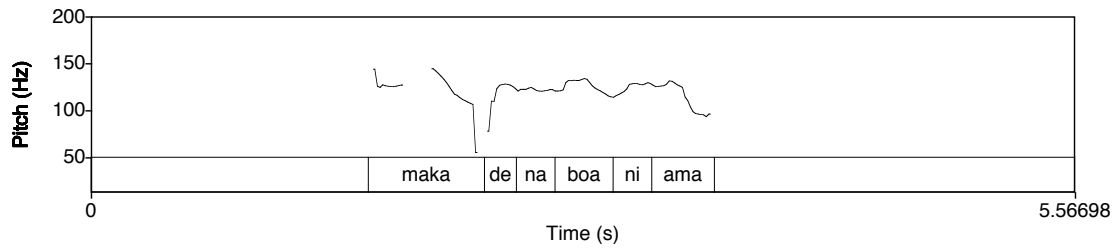
oda-ka owa ta amo-nei, haa owa ta amo-nei owara.
 1PL-POSS other CONTR sleep-AUX.M DEM 1S-OBJ CONTR sleep-AUX.M NEG
 The OTHER ONE slept but I didn't sleep.

5. [A3.WAV](#)

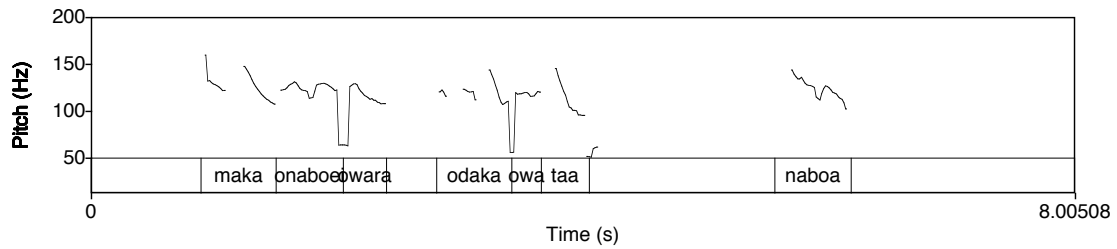
yumai yokana de-awe owarei-no?
 jaguar 2PL-see NEG-IP.NONEYE
 did you see a jaguar? (lit. didn't you see a jaguar?)

6. [B3.WAV](#)

maka ta oda awa owa wayi-nane ama-ke
 snake CONTR 1PL see 1S-OBJ bite-almost EQU-DEC
 no, but a SNAKE nearly bit me.

7. [A4.WAV](#)

maka de na-bowa-ni ama?
 snake 2PL CAUS-die-? EQU
 Did you kill the snake?

8. [B4.WAV](#)

maka o-na-bowei owara oda-ka owa ta hi-na-bowa.
 snake 1S-CAUS-die NEG 1PL-POSS other CONTR 3-CAUS-die
 I didn't kill the snake but my COMPANION killed it.